

▶ GALLERY MAP

Country Music Hall of Fame® and Museum



The Museum honors the music of classic and current artists, showcasing one-of-a-kind recordings, instruments, stage wear, and more from country's most exciting and enduring stars. Experience the music of Outlaws like Willie Nelson and Waylon Jennings, alongside the timeless King, and celebrated contemporary storytellers like Miranda Lambert and Jason Isbell.

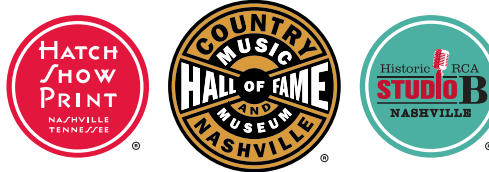
It is an unending history book, a story that will go on as long as young men and women have a desire in their hearts and a fire in their bellies...

- Charlie Daniels

The Country Music Hall of Fame Rotunda is a space of dignity and beauty that recognizes members and inspires reverence for the deepest roots of the music and for the significant figures in the music's history. Conclude your tour in this sacred space, where a growing band of inductees' plaques lines the walls and reminds us of this essential story.



Hall of Fame Rotunda



The Country Music Hall of Fame® and Museum seeks to collect, preserve, and interpret the evolving history and traditions of country music. Through exhibits, publications, and educational programs, the Museum teaches its diverse audiences about the enduring beauty and cultural importance of country music.

Open daily 9:00 AM – 5:00 PM
 Closed Thanksgiving, Christmas Eve, and Christmas Day
 #CMHOF • @CountryMusicHOF
 CountryMusicHallofFame.org
 222 5th Ave. South • Nashville, TN 37203 • 615.416.2001



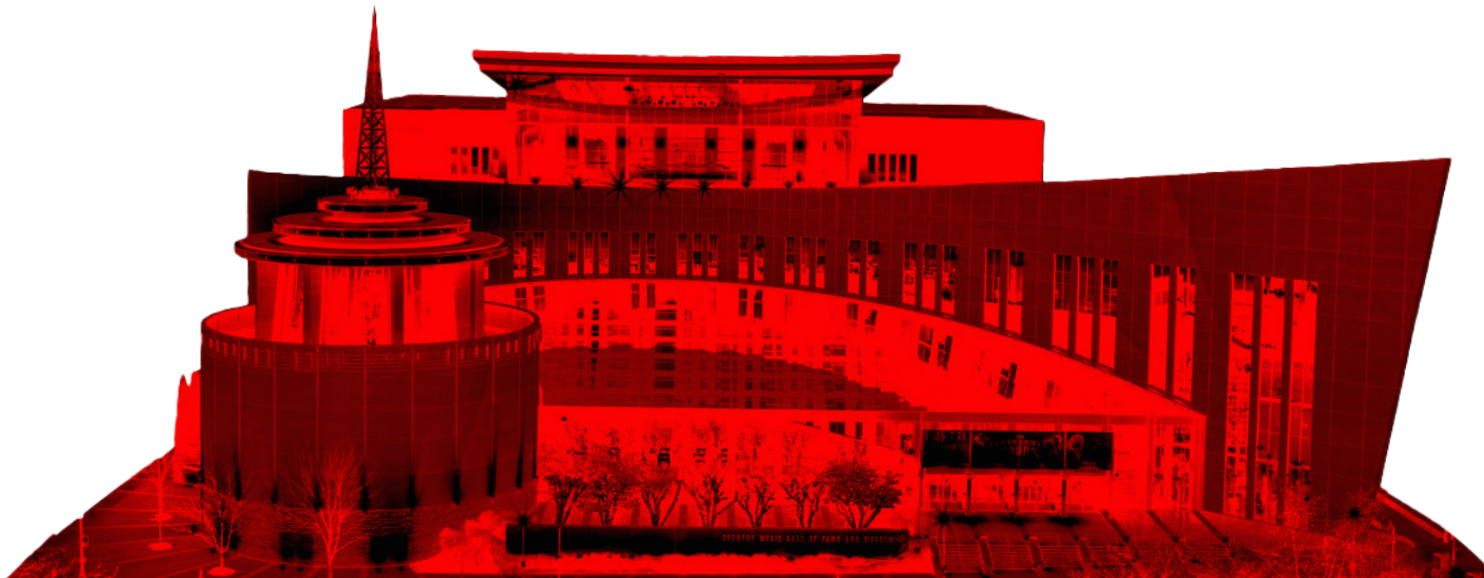
Museum programs are funded in part by the Metropolitan Nashville Arts Commission and Tennessee Arts Commission.



Registered service animals welcome.

COUNTRY MUSIC FOUNDATION®

The Country Music Hall of Fame and Museum is operated by the Country Music Foundation, Inc., a Section 501(c)(3) non-profit educational organization chartered by the state of Tennessee in 1964.



A TIMELESS TRIBUTE Architecture at the Hall

The Museum's Architecture, with its unique design and materials, celebrates country music and Southern culture. As you explore the building, look for these elements that incorporate country music's past and present.



Windows on the front of the building reference black piano keys.

Cylindrical Shape of the Country Music Hall of Fame Rotunda recalls the railroad water towers and grain silos found in rural settings.



Giant Sweeping Arch terminating in an angle on the right side of the building portrays a 1950s Cadillac fin.

Four Disc-Shaped Tiers on the Rotunda's roof represent the evolution of recording technology: the 78, the vinyl LP, the 45, and the compact disc.



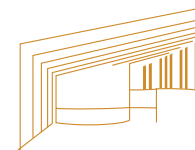
Vertical Stone Bars along the top of the Rotunda's outside wall portray the notes along the staff for the Carter Family song "Will the Circle Be Unbroken," the unofficial anthem of the Museum.

Tower rising from the Rotunda resembles the diamond-shaped WSM radio tower, which was instrumental in the growth of country music.



From overhead, the front wall of the building is fashioned in the shape of a **Bass Clef**.

Center-cut **Yellow Pine Floor** of the Mike Curb Conservatory, Ford Theater, and Hall of Fame Rotunda is a hardwood indigenous to the region. Crab Orchard stone, cut from the hills of East Tennessee, lines the walls of the Mike Curb Conservatory and Rotunda.

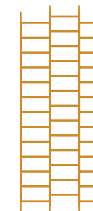


Mike Curb Conservatory was designed to symbolize the "front porch" origins of country music and to function as a hospitable place of assembly for the community and visitors from around the world. The architects drew inspiration for its heavy steel frame from railroads and bridges that connect the small towns where country music came to life.

Water cascading along the Grand Staircase represents the flow of artistic inspiration, starting as a trickle and flowing into a larger fountain to show the music's movement from the streams of the Appalachians, throughout the South, and into the Mississippi Delta.




Beams and Brackets supporting the large glass wall along the second and third floors reference the fretboard of a guitar.



Gallery Guide Key

-  ELEVATOR
-  RESTROOM
-  FIRE EXIT
-  ACCESSIBLE
-  WATER FOUNTAIN

FAMILY RESTROOM

 **TAYLOR SWIFT EDUCATION CENTER**

RIGHT: Photo by Chris Polk, Getty Images for TAS

Begin on floor 3

THE JUDDS

OPEN THROUGH JULY 14, 2019

BROOKS & DUNN

OPEN AUGUST 9, 2019 THROUGH JULY 12, 2020



LEFT: By the time Wurlitzer rolled out this 1015 model in 1947, jukeboxes were required equipment in country music night spots throughout America.

RESTROOM

Begin tour here

SING ME BACK HOME: FOLK ROOTS TO THE 1960s



ABOVE: Elvis Presley's 1960 Cadillac 75 Limousine



LEFT: Bill Monroe's 1923 Gibson F-5 Mandolin

EMMYLOU HARRIS

OPEN THROUGH AUGUST 4, 2019

FELICE AND BOUDLEAUX BRYANT

OPEN OCTOBER 4, 2019 THROUGH AUGUST 2, 2020

KEITH WHITLEY


OPEN MAY 3, 2019 THROUGH APRIL 6, 2020



GOLD RECORD WALL

STAIRS TO FLOOR 2

FAMILY RESTROOM

 **AMERICAN CURRENTS THE MUSIC OF 2018**

OPEN THROUGH FEBRUARY 9, 2020



Continue on floor 2

SING ME BACK HOME: 1960s TO PRESENT



LEFT: This 1980 Pontiac Trans Am T-top coupe was used in the 1990 Hollywood film *Smokey and the Bandit II*.



LEFT: Waylon Jennings, 1973
Photo by Raeanne Rubenstein

RESTROOM

HALL OF FAME ROTUNDA



Conclude Tour Here

LITTLE BIG TOWN

OPEN THROUGH JUNE 9, 2019

KACEY MUSGRAVES

OPEN JULY 3, 2019 THROUGH JUNE 7, 2020

OUTLAWS & ARMADILLOS:

COUNTRY'S ROARING '70s
OPEN THROUGH FEBRUARY 14, 2021

STAIRS FROM FLOOR 3



LEFT: *Rising from the Ashes, Willie Takes Fight for Austin*, Sam Yeates

Continue tour here