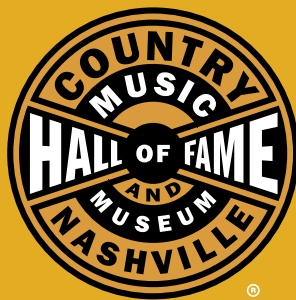




GROUP TOURS AT THE HALL



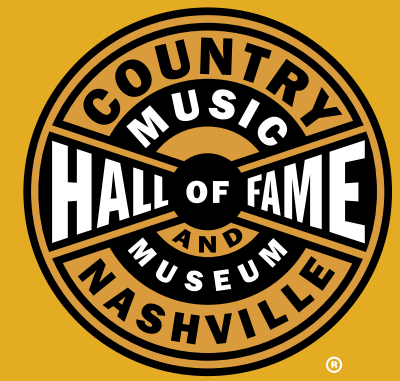
HONOR THY MUSIC[®]

COUNTRY MUSIC LIVES HERE.[™]



**“THE HOUSE
THAT HOLDS
ALL THE MUSIC”**

– VINCE GILL



HONOR THY MUSIC®

The Country Music Hall of Fame® and Museum appeals to all ages and musical tastes. For more than 40 years, the Museum has been home to thousands of priceless artifacts, images, and sounds that have inspired young and old from around the globe.

Your group will experience true Southern hospitality, a musical journey they'll never forget, and find out for themselves why *Country Music Lives Here.*



AN EXPERIENCE LIKE NO OTHER

FEEL RIGHT AT HOME

SING ME BACK HOME:

The Journey Begins

FOLK ROOTS TO THE 1960s

One of the Museum's core exhibitions, *Sing Me Back Home: The Journey Begins—Folk Roots to the 1960s*, is a multi-layered experience examining country music's humble origins and follows its evolution into the second half of the 20th century. From Jimmy Rogers and the earliest days of the Grand Ole Opry to the crossover smash hits of Patsy Cline, Marty Robbins, and Elvis Presley. See how the sounds of rural America changed the course of music history.



dreaming MY DREAMS

THE JOURNEY CONTINUES
1960s to the Present

Recently, the Museum opened an all-new exhibit experience, *Dreaming My Dreams: The Journey Continues—1960s to the Present*, adding hundreds of artifacts and multimedia elements that focus on country music's recent history. Artists such as Dolly Parton, Reba McEntire, Garth Brooks, Kenny Chesney, Brooks & Dunn, and Taylor Swift have stretched the boundaries of country music and won new audiences around the world, while remaining true to the real lives of real people, retaining its popular spirit into the 21st century.



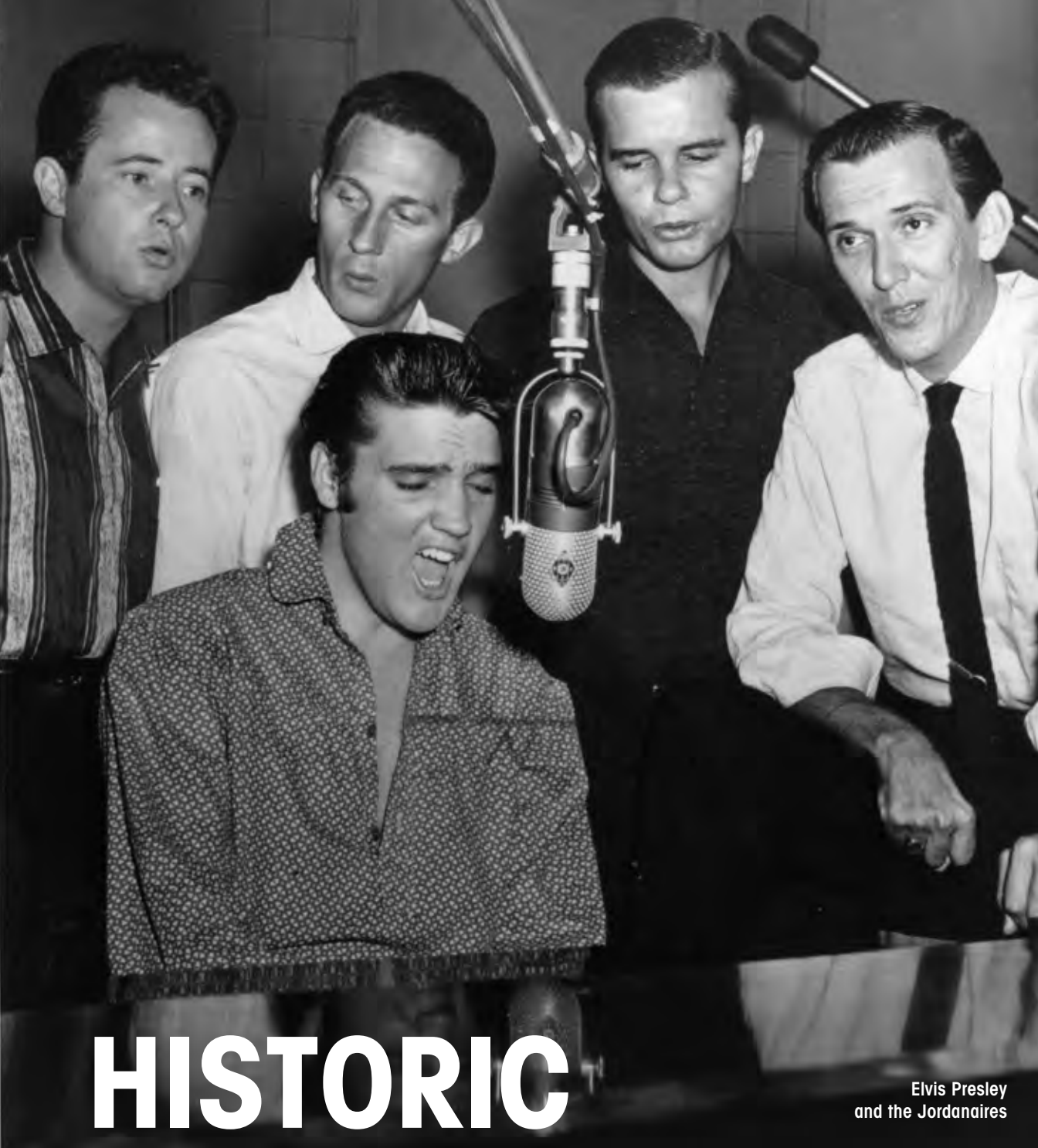


The Country Music Hall of Fame Rotunda

A PLACE OF REVERENCE

THE COUNTRY MUSIC HALL OF FAME

Election to the Country Music Hall of Fame is the most esteemed honor in country music. The Rotunda is a special room designed to recognize Hall of Fame members in a space and fashion befitting this high honor. Members' plaques are placed randomly in the round room to ensure that each has a place of equal importance. Visitors to the Museum's 5,300-square-foot Rotunda agree that this space represents the deepest roots of the music and the highest aspirations of the membership.



Elvis Presley
and the Jordanaires

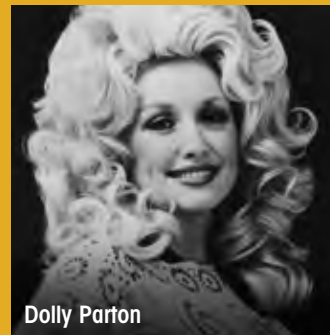
HISTORIC RCA STUDIO B

NASHVILLE'S ONLY STUDIO TOUR



Nestled on renowned Music Row, Historic RCA Studio B is the oldest surviving recording studio in Nashville and one of the most famous studios in the world.

The studio was once used regularly by legends such as Eddy Arnold, Dolly Parton, and Elvis Presley—and more recently, Martina McBride, Marty Stuart, and Carrie Underwood have stepped up to this fabled microphone. Over 35,000 songs were recorded at the legendary studio, including “It’s Now or Never,” “Only the Lonely,” and “I Will Always Love You.” See where many of the greatest performers of the past fifty years created timeless music and made recording history.



Dolly Parton



Marty Stuart



Roy Orbison



Charley Pride



The Everly Brothers



ONE-OF-A-KIND EXPERIENCES

CUSTOMIZE YOUR ITINERARY

HISTORIC RCA STUDIO B TOUR 🎵

Complete your Museum experience with an up-close look at Nashville's oldest remaining recording studio through a personally guided tour. Your group will hear the stories behind the legendary recordings, view vintage film footage, artifacts, photos and the original instruments used in producing countless hit recordings. *Duration: 1 hour*



Dolly Parton
and Porter Wagoner

STAR FOR A DAY 🎵

The star treatment begins on Music Row at Historic RCA Studio B. Your group will be personally guided and given insight into the hits that were recorded there by some of the most famous artists of all time. Then, your group will step up to the microphone and record a song in the same studio used by music's biggest stars. The excursion ends at the world-famous Wildhorse Saloon for a barbecue buffet, line-dancing lessons, and a "listen" to the group's new single. Be a hit with your group by making them a "Star For A Day." *Duration: 2-1/2 hours*



STORIES BEHIND THE SONGS 🎵

Discover the stories behind the music you love in a private session with one of Nashville's hit-making songwriters. This intimate session allows the rare opportunity to hear hits as they were originally written. The writer demonstrates to the group how a song is created from concept to hit. Each session ends with a meet and greet where the writer signs autographs, answers questions, and has recordings available for purchase. *Duration: 1 hour*



SHARING THE ART OF SONGWRITING 🎵

This session is an interactive hour in which your group acts as the co-writer of a song with one of Music City's most accomplished songwriters. The writer guides the group in composing original lyrics. The session concludes with the songwriter and group recording Nashville's newest tune together. You won't find another experience for your group that's more uniquely Nashville. *Duration: 1 hour*



🎵 These special packages and programs can be added to your Museum itinerary for an additional fee. Please inquire with your group sales specialist.

🎵 Keepsake CDs of the recordings are available for purchase.

MORE WAYS TO CUSTOMIZE YOUR TRIP

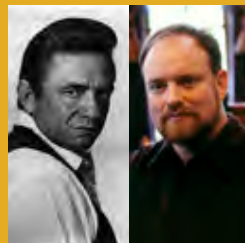
LEGENDS, LUNCH, AND LYRICS **NEW**

Nashville is home to country music, delicious Southern cooking, and great hospitality. These Nashville traditions come together in this brand new package. Groups enjoy a classic Southern “Meat n’ Three” lunch as they are entertained by the songs, stories, and writing insight from one of Nashville’s most accomplished songwriters. It is the quintessential Music City experience. *Duration: 1 hour without Museum tour. Museum admission included.*



CASH ON CASH **NEW**

No one told a story quite like Johnny Cash. That tradition continues with this new program, exclusively offered at the Country Music Hall of Fame® and Museum. Enjoy a private performance and discussion with Johnny and June’s son, John Carter Cash. John Carter will entertain you with his own original music, as well as a few numbers made famous by his legendary family. He will also answer questions from the audience and conclude with a meet and greet. *Duration: 1 hour without Museum tour. Museum admission included. Based on availability.*




MUSIC CITY SHOWCASE FOR PERFORMANCE GROUPS

Whether you have a singing group of twenty or a marching band of a hundred, a performance at the Museum is an experience your group will remember for a lifetime. *Duration: 30 minutes*



CELEBRITY AUDIO TOUR

Bring history to life with this guided Museum audio tour, given by Bill Cody, Charlie Daniels, Vince Gill, Dolly Parton, and others. *Duration: approx. 1 hour*

 These special packages and programs can be added to your Museum itinerary for an additional fee. Please inquire with your group sales specialist.



COMPLETE YOUR GROUP'S JOURNEY

SPEND A DAY WITH US

MUSEUM STORE

Our 5,000-square-foot Museum Store has one of the largest inventories of country music titles anywhere. There is also an extensive selection of country music books, apparel, gifts, and more. Be sure to check our website for celebrity performances or autograph signings during your group’s visit.



HATCH SHOW PRINT

Opened in 1879 and presently owned and operated by the Museum, Hatch Show Print is one of America’s oldest and most revered print shops. Groups can choose from the many posters that Hatch has designed, or have one customized. Visit Hatch at 316 Broadway, just a block from the Museum.



TWO TWENTY-TWO GRILL AND CATERING

Our full-service restaurant is the perfect place for your group to enjoy a Southern-inspired meal. Located in the Museum’s Curb Conservatory, we offer a variety of Southern favorites featuring locally grown produce with live music served on the side. Whether your group needs continental breakfast, buffet lunch, or box lunches, Two Twenty-Two Grill & Catering can accommodate your dining needs.



Lunch served Monday – Saturday from 11:00 a.m. – 2:30 p.m.

*Sunday Brunch served 10:00 a.m. – 3:00 p.m. **NEW***

Special reservations and times can be arranged to fit your group’s itinerary.



COUNTRY MUSIC HALL OF FAME® AND MUSEUM

HOURS

Open daily 9 a.m.–5 p.m. daily
Closed Tuesdays in January and February,
as well as Thanksgiving, Christmas and New Year's Days.

COMP POLICY

Complimentary admission is available for your group escort and driver.

HOW TO FIND US

We are located on Demonbreun Street between 4th and 5th Avenue across the street from Bridgestone Arena in the heart of downtown Nashville.

PARKING

Parking options vary. Please contact us for up-to-date parking information. Also, easily locate and map public parking options at ParkItDowntown.com.

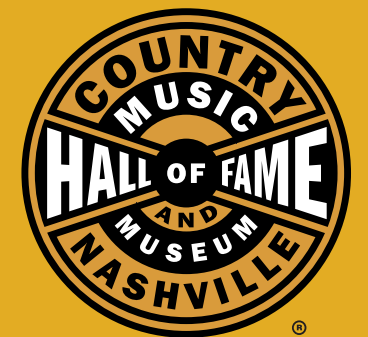
GROUP CHECK-IN

Upon arrival, please have the escort check in at the Information Desk before unloading the motor coach.

222 5TH AVE. SOUTH
NASHVILLE, TN 37203

800.852.6437

COUNTRYMUSICHALLOFFAME.ORG



HONOR THY MUSIC®

OUR MISSION is to identify and preserve the evolving history and traditions of country music and to educate our audiences.



The Country Music Hall of Fame® and Museum is operated by the Country Music Foundation, Inc., a Section 501(c)(3) non-profit educational organization chartered by the state of Tennessee in 1964. Historic RCA Studio B is operated as an educational partnership between the Country Music Hall of Fame & Museum and Belmont University. Preservation of Historic RCA Studio B made possible by the Mike Curb Family Foundation.

GROUP PRICING 2012

RETAIL MUSEUM ADMISSION

Adults: \$20 Youth: \$13

GROUP MUSEUM ADMISSION

Adults: \$16.50 Youth: \$ 9.50

PROFESSIONAL TOUR OPERATOR MUSEUM ADMISSION

Adults: \$16 Youth: \$ 9

GROUP PACKAGES

Legends, Lunch and Lyrics

Tour Operator: \$58 Group Leaders: \$60

Cash on Cash \$55

Packages are valid for 30 people or more. Includes Museum admission. Based on availability.

ADDITIONAL ITINERARY OPTIONS

Historic RCA Studio B Group Tour

Adults: \$11 Youth: \$ 9

Star for a Day \$800

(Includes Studio B tour and recording session)

Stories Behind the Songs \$750

Sharing the Art of Songwriting \$750

Music City Showcase Free with museum admission

(for performance groups)

Celebrity Audio Tour

Retail: \$ 5 Group: \$ 2 in advance / \$4 on-property

 Rate valid for up to 55 people.

All group rates, unless otherwise noted, apply to 15 or more people.
Prices subject to change, and sold only in conjunction with Museum admission.

CONTACT

Group Sales Department • 800.852.6437 • info@countrymusichalloffame.org

GROUP LUNCH OPTIONS

WE INVITE YOU AND YOUR GROUP TO DINE WITH US

Our full-service restaurant is the perfect destination for groups of any size visiting the Nashville area. Here is some information to keep in mind when planning your group's dining experience.

- For larger groups (25-150 persons), we suggest utilizing our group buffet options.
- Customized breakfast menus are available upon request.
- Advance reservations and menu selections are required for large parties and must be made at least 72 hours in advance.
- Complimentary seating is provided for all group buffets.



WE LOOK FORWARD
TO SERVING YOU SOON!



HONOR THY MUSIC®

800.852.6437

COUNTRYMUSICHALLOFFAME.ORG

LUNCH PACKAGES

THE SMOKEHOUSE

\$25 (Includes tax and gratuity)

- BBQ quartered chicken and pulled BBQ pork (BBQ sauce, chow chow, assorted hot sauces and pickles)
- Cole slaw and Southern-style potato salad
- Home-style mashed potatoes, seasonal greens, and fried 'shoe peg' corn
- Fresh baked cornbread with sweet cream butter
- Choice of: House-made apple crisp, strawberry shortcake or mixed berry cobbler

MEAT N' THREE

\$23 (Includes tax and gratuity)

- Chef's choice of two made-from-scratch Southern-style meats
- Home-style mashed potatoes
- Two seasonal vegetables
- Tossed salad
- Fresh baked artisan breads with sweet cream butter
- Choice of: Fresh squeezed orange juice cake and chocolate kahlua cake

BACK YARD BBQ

\$21 (Includes tax and gratuity)

- Grilled hamburgers and hotdogs
(Crisp lettuce, tomato, onion and pickles, cheddar, swiss and pepper jack cheeses, condiments)
- Cole slaw, Southern-style potato salad, and baked beans
- Soft buns and rolls
- Fresh baked cookies or brownies

DELI BUFFET

\$21 (Includes tax and gratuity)

- Deli sliced smoked breast of turkey, honey glazed ham, and roast sirloin of beef
(Crisp lettuce, tomato, onion and pickles, cheddar, swiss and pepper jack cheeses, condiments)
- Tossed salad with assorted dressings, pasta salad prima vera, and three bean salad
- Assorted breads and rolls
- Fresh baked cookies or brownies

BOX LUNCH

\$18 (Includes tax and gratuity)

- Choice of freshly made sandwich:
 - Grilled chicken breast with pepper jack cheese
 - Smoked roast beef with cheddar cheese and horseradish sauce
 - Hickory smoked turkey and swiss cheese
 - Julienne of marinated fresh vegetables and feta cheese in a pita
- Pasta salad prima vera
- Seasonal fruit salad
- Fresh baked cookie or brownie
- Chilled bottled water or soft drink

Prices and menus are subject to change.

For an additional \$3.00 per person, seating can be arranged for all Box Lunch orders.



HONOR THY MUSIC®

LIMITED ENGAGEMENT EXHIBITS



Chet Atkins: CERTIFIED GUITAR PLAYER

CHET ATKINS: CERTIFIED GUITAR PLAYER

Made possible by **GRETSCH** That Great Gretsch Sound! Additional support provided by **GAC** www.gac.com

Exhibit Open Through July 15, 2012

This exhibit examines the life and career of one of the most significant figures in country music history. As an instrumentalist and recording artist, Atkins influenced generations of country, rock, and jazz guitarists with a smooth finger-picking style that earned him the nickname "Mr. Guitar." The exhibit includes many rare and unique guitars from Atkins' personal collection.



THE BAKERSFIELD SOUND: BUCK OWENS, MERLE HAGGARD, AND CALIFORNIA COUNTRY

Support provided by **ACADEMY**
OF COUNTRY MUSIC

Exhibit Open March 23, 2012 – Dec. 31, 2013

Two of country music's most respected, influential, and successful artists, Merle Haggard and Buck Owens, emerged in the 1960s from the thriving Bakersfield, California music scene. Haggard and Owens became the best-known exponents of the distinctive "Bakersfield Sound," the name given to their sharp-edged, commercially-viable alternative to the smooth Nashville Sound. This exhibit will draw on the Museum's rich collection of artifacts, vintage film footage, photos, costumes, and more to tell the story.



PATSY CLINE: CRAZY FOR LOVING YOU

Exhibit Open August 24, 2012 – June 2013

With her rich, emotive vocals, powerful personality, and a body of recordings that still resonates fifty years after her untimely death, Patsy Cline made an indelible mark on country and pop music. This cameo exhibition examines the life and tragically brief career of one of country music's most iconic figures through the eyes of her family, friends, and peers.